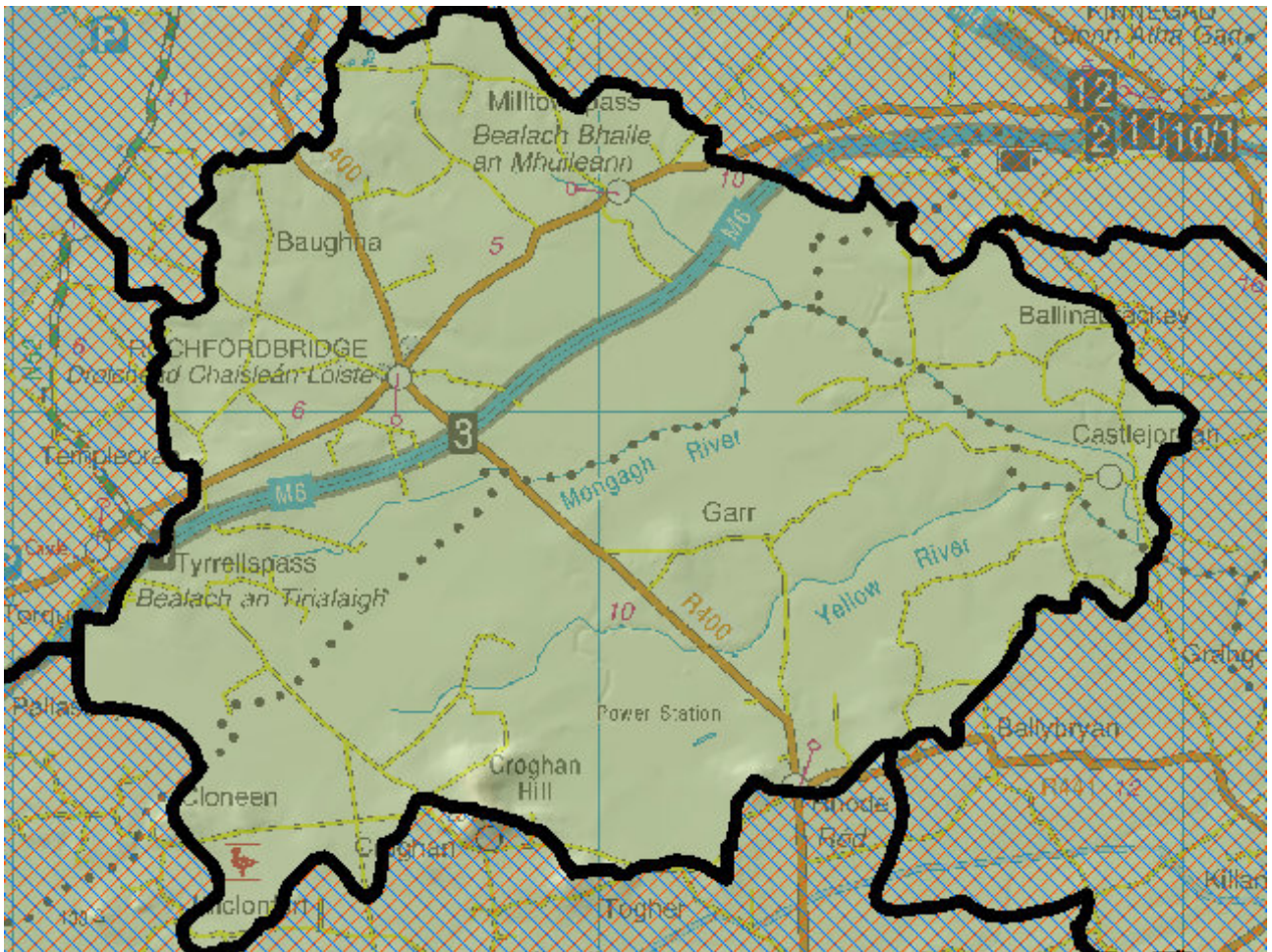


WFD Cycle 2

Catchment Boyne

Subcatchment Yellow
[Castlejordan]_SC_010

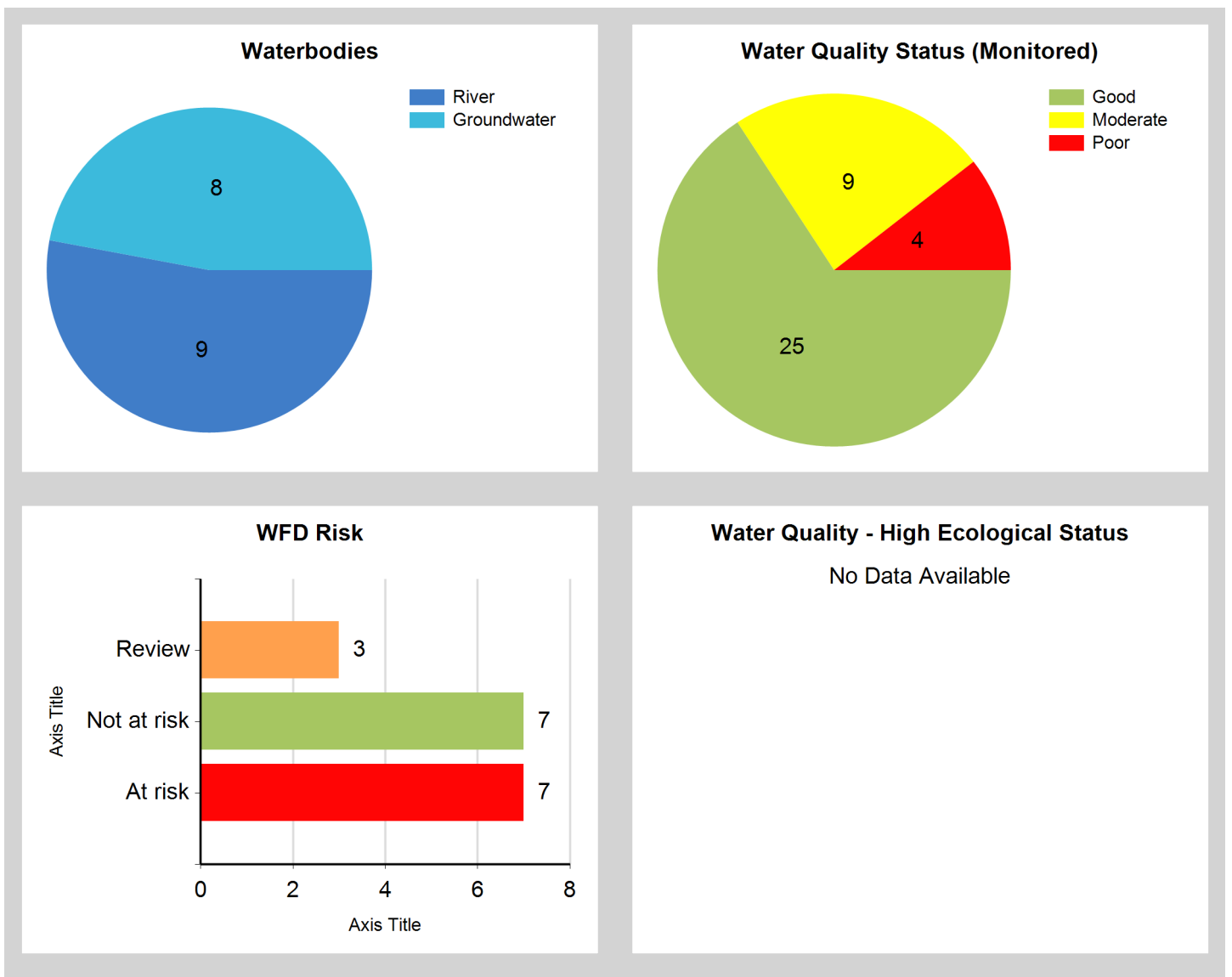
Code 07_11



Assessment Purpose

This assessment has been produced as part of the national characterisation programme undertaken for the second cycle of Water Framework Directive river basin management planning. It has been led by the EPA, with input from Local Authorities and other public bodies, and with support from RPS consultants.

The characterisation assessments are automatically generated from the information stored in the WFD Application. They are based on information available to the end of 2015 but may be subject to change until the final 2018-21 river basin management plan is published. Users should ensure that they have the most up to date information by downloading the latest assessment before use.

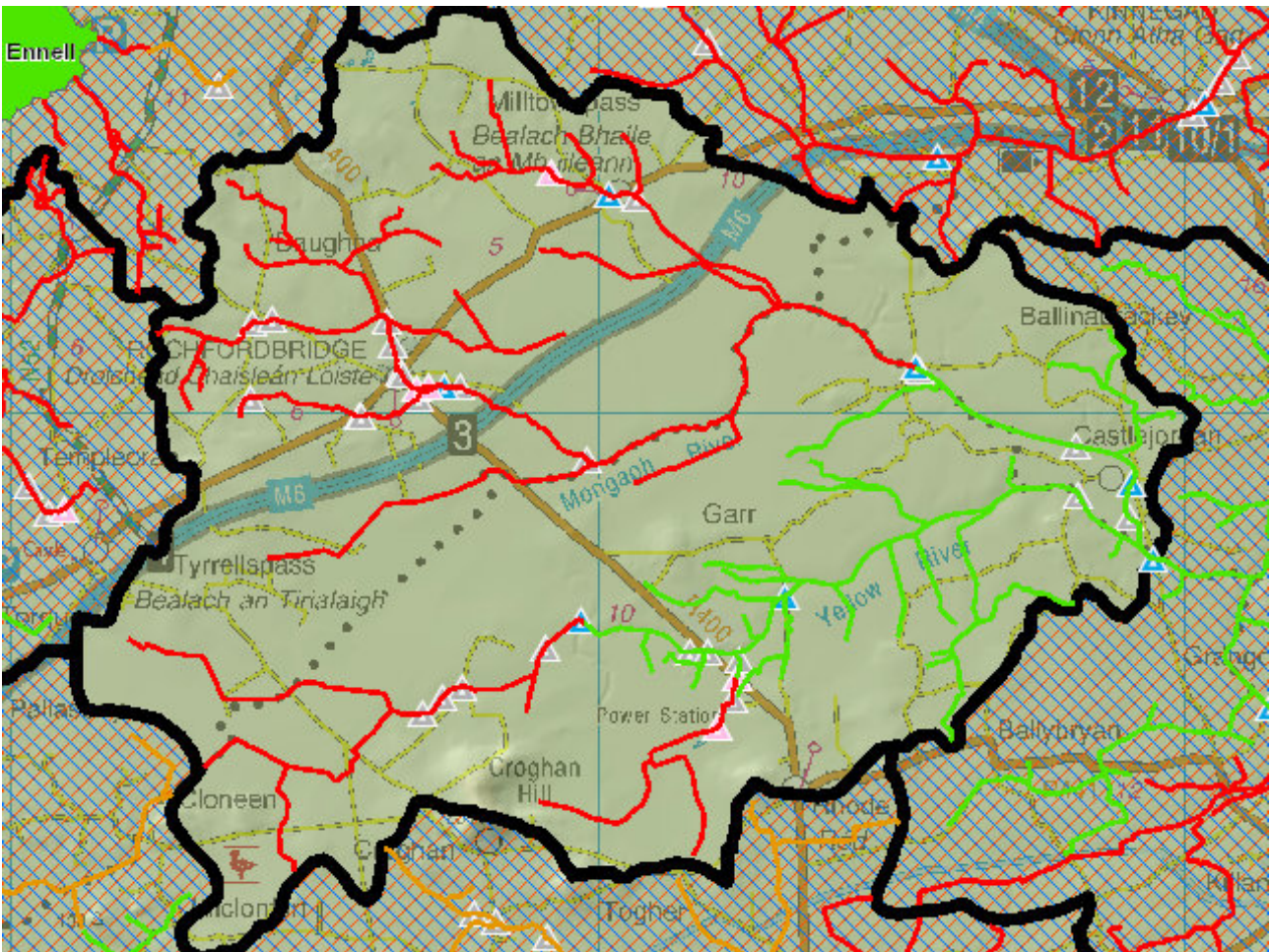


Evaluation of Priority Subcatchment Issues

Eight out of nine river water bodies within this subcatchment are AT RISK: Castlejordan_010 and Rochfortsbridge Stream_010 due to less than Good biological status and elevated phosphate and ammonia; Castlejordan_020 and Milltownpass_010 due to less than Good biological status and elevated ammonia; Castlejordan_030 and Yellow (Castlejordan)_020 due to elevated ammonia; Yellow (Castlejordan)_010 due to a drop in biological status from Good to Moderate; Castletown Tara Stream_010 due to elevated phosphate and ammonia. Biological status was driven by invertebrates for all water bodies.

Peat extraction is the significant issue throughout the subcatchment. In addition, urban waste water treatment and urban diffuse is likely to be also impacting Castlejordan_010 while septic tanks, misconnections and a licensed facility may be also impacting Milltownpass_010. Yellow (Castlejordan)_010 and Yellow (Castlejordan)_020 are also impacted by diffuse agriculture (particularly as located on peaty soils).

Map Subcatchment Risk Map

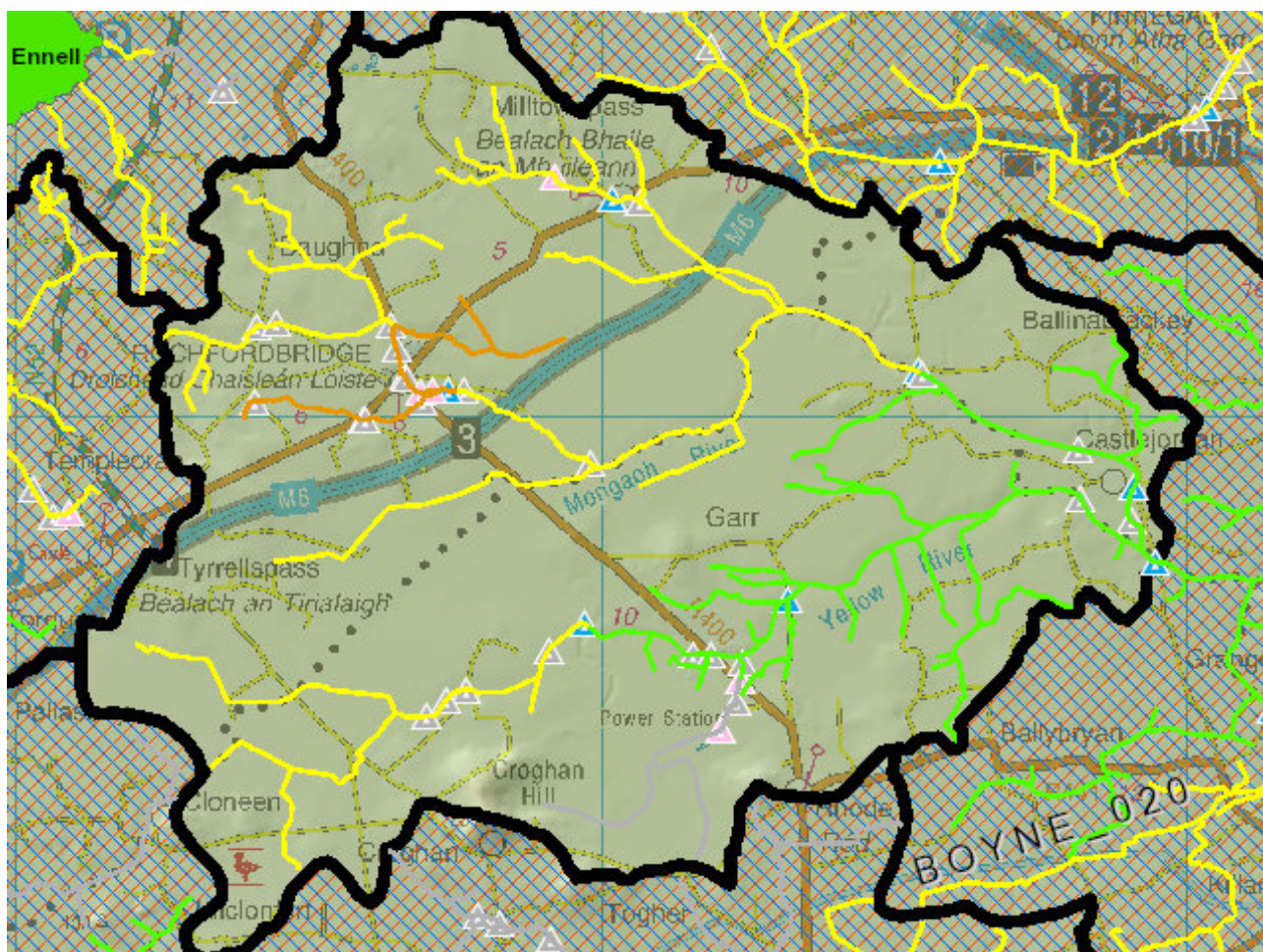


River And Lake Waterbodies: WFD Risk

The following river and lake waterbodies are in the subcatchment.

Code	Name	Type	WFD Risk	Significant Pressure
IE_EA_07C040050	CASTLEJORDAN_010	River	At risk	Yes
IE_EA_07C040100	CASTLEJORDAN_020	River	At risk	Yes
IE_EA_07C080190	CASTLETOWN TARA STREAM_010	River	At risk	Yes
IE_EA_07M040400	MILLTOWNPASS_010	River	At risk	Yes
IE_EA_07R040300	ROCHFORDBRIDGE STREAM_010	River	At risk	Yes
IE_EA_07Y020070	YELLOW (CASTLEJORDAN)_010	River	At risk	Yes
IE_EA_07C040190	CASTLEJORDAN_030	River	Not at risk	Yes
IE_EA_07Y020100	YELLOW (CASTLEJORDAN)_020	River	Not at risk	Yes

Map Subcatchment Water Quality Status Map



River And Lake Waterbodies: Water Quality Status

The water quality status of river and lake waterbodies in the subcatchment is as follows.

Code	Name	Type	2007-09	2010-12	2010-15
IE_EA_07C040050	CASTLEJORDAN_010	River	Poor	Poor	Poor
IE_EA_07C040100	CASTLEJORDAN_020	River	Moderate	Moderate	Moderate
IE_EA_07C040190	CASTLEJORDAN_030	River	Good	Good	Good
IE_EA_07C080190	CASTLETOWN TARA STREAM_010	River	Unassigned	Unassigned	Unassigned
IE_EA_07M040400	MILLTOWNPASS_010	River	Unassigned	Poor	Moderate
IE_EA_07R040300	ROCHFORTBRIDGE STREAM_010	River	Unassigned	Moderate	Moderate
IE_EA_07Y020070	YELLOW (CASTLEJORDAN)_010	River	Good	Good	Moderate
IE_EA_07Y020100	YELLOW (CASTLEJORDAN)_020	River	Moderate	Moderate	Good
IE_EA_07Y020300	YELLOW (CASTLEJORDAN)_030	River	Good	Good	Good

Potentially Dependent Transitional and Coastal Waterbodies

The Transitional and Coastal waterbodies listed below intersect spatially with river and lake waterbodies in the subcatchment ...

Code	Name	Type	Local Authority	WFD Risk
------	------	------	-----------------	----------

Potentially Dependent Groundwater Waterbodies

The groundwaters listed below intersect spatially with river and lake waterbodies in the subcatchment ...

Code	Name	Type	Local Authority	WFD Risk
IE_EA_G_001	Athboy	Groundwater	Westmeath County Council	Review
IE_EA_G_002	Trim	Groundwater	Meath County Council	At risk
IE_EA_G_074	GWDTE-Raheenmore Bog (SAC000582)	Groundwater	Offaly County Council	Review
IE_SE_G_049	Daingean	Groundwater	Offaly County Council	Not at risk
IE_SE_G_116	Rhode	Groundwater	Offaly County Council	Not at risk
IE_SH_G_103	Geashill	Groundwater	Offaly County Council	Not at risk
IE_SH_G_240	Clara	Groundwater	Offaly County Council	Not at risk
IE_SH_G_242	Kilbeggan Gravels	Groundwater	Westmeath County Council	Review

Protected Areas intersecting River and Lake Waterbodies

The Protected Areas listed below intersect spatially with river and lake waterbodies in the subcatchment ...

Code	Name	Type	Waterbody Name	Association Type
IE0000582	Raheenmore Bog SAC	SAC	YELLOW (CASTLEJORDAN)_010	Overlapping / partly within Protected Area
IEPA1_EA_07C040100	CASTLEJORDAN_020	Drinking Water	CASTLEJORDAN_020	Within Protected Area

Pressures

Below is a list of all significant pressures identified in the subcatchment.

Code	Name	WFD Risk	Pressure Category	Pressure Sub Category
IE_EA_07C040050	CASTLEJORDAN_010	At risk	Extractive Industry	Peat
IE_EA_07C040050	CASTLEJORDAN_010	At risk	Urban Waste Water	Agglomeration PE of 2,001 to 10,000
IE_EA_07C040050	CASTLEJORDAN_010	At risk	Urban Run-off	Diffuse Sources Run-Off
IE_EA_07C040100	CASTLEJORDAN_020	At risk	Extractive Industry	Peat - Harvesting
IE_EA_07C080190	CASTLETOWN TARA STREAM_010	At risk	Extractive Industry	Peat - Harvesting
IE_EA_07M040400	MILLTOWNPASS_010	At risk	Domestic Waste Water	Waste Water discharge
IE_EA_07M040400	MILLTOWNPASS_010	At risk	Industry	Section 4
IE_EA_07R040300	ROCHFORTBRIDGE STREAM_010	At risk	Extractive Industry	Peat
IE_EA_07Y020070	YELLOW (CASTLEJORDAN)_010	At risk	Agriculture	Pasture
IE_EA_G_002	Trim	At risk	Agriculture	Agriculture
IE_EA_G_002	Trim	At risk	Domestic Waste Water	Waste Water discharge
IE_EA_G_001	Athboy	Review	Anthropogenic Pressures	Unknown
IE_EA_G_074	GWDTE-Raheenmore Bog (SAC000582)	Review	Anthropogenic Pressures	Unknown
IE_SH_G_242	Kilbeggan Gravels	Review	Anthropogenic Pressures	Unknown

Further Characterisation Actions

The following further characterisation actions have been identified. These are necessary to help understand more fully issues in the subcatchment and their likely cause.

Code	Name	Action	Responsible Organisation
IE_EA_07M040400	MILLTOWNPASS_010	IA4 Regulated Point Sources	Westmeath County Council
IE_EA_07C040050	CASTLEJORDAN_010	IA2 Point Source Desk Based Assessment	Westmeath County Council
IE_EA_07R040300	ROCHFORTBRIDGE STREAM_010	IA1 Provision of Information	Environmental Protection Agency
IE_EA_07Y020070	YELLOW (CASTLEJORDAN)_010	IA7 Multiple Sources in Multiple Areas	Offaly County Council
IE_EA_07C080190	CASTLETOWN TARA STREAM_010	IA1 Provision of Information	Environmental Protection Agency
IE_EA_07C040100	CASTLEJORDAN_020	IA1 Provision of Information	Environmental Protection Agency
IE_EA_07Y020070	YELLOW (CASTLEJORDAN)_010	IA3 Determination of Water Quality (unassigned waterbody)	Offaly County Council
IE_EA_07C040050	CASTLEJORDAN_010	IA6 Multiple Sources in Large Urban Area	Westmeath County Council